

# FURUTECH

www.furutech.com

## NEW in 2006!



### **e-TP609**

#### **AC Power Distributor**

**New!** Furutech Axial Locking System

GC-303 *EMI*-Absorbing Internal Coating

All Metal Parts Treated with Furutech's

2-Stage Cryogenic and Demagnetizing *α-Alpha Process*

The e-TP609 is a sophisticated, luxuriously made single-chassis power distributor that eliminates many common problems found in audio and video components caused by massively contaminated electrical power lines.

The AC waveform becomes severely distorted by ground noise, voltage spikes and sags, high frequency power supply noise from other components in your own system, plus radiated high frequency digital noise from processors and digital interconnects. There are also distortion products at the top and bottom of the AC waveform created by switch-mode power supplies in electronic devices on the same circuit. Additionally, you're never alone; your residential AC mains supply is shared with other apartments, homes, and businesses on the same utility transformer. That's why many audio and video enthusiasts notice their systems are more enjoyable late at night or on weekends!

How can you tell you're a victim of polluted AC power? Listen and look for these symptoms: Flat, hard, and grainy high frequencies, a thick and bloated midrange, fat, uncontrolled bass, and loss of air and soundstage stability. On video displays the picture resolution is less than sharp, with "ghosting", color shift, "snow", or vertical and horizontal lines. If this looks and sounds familiar, you need Furutech!

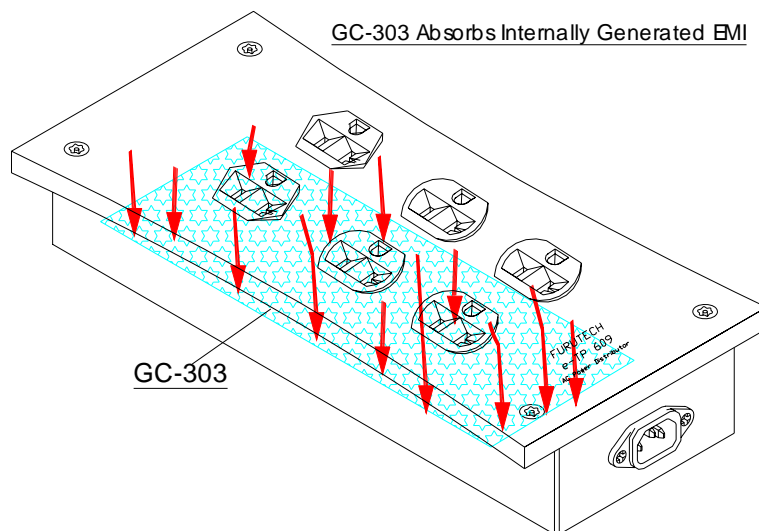
## Total Attention to Detail and Build Quality

Many A/V enthusiasts go to great lengths to carefully set up major system components, but pay little attention to the source, the AC power. Furutech knows that each and every part of the chain is as important as the next, so maximum attention is lavished by Furutech on *all* aspects of AC power transfer.

The beautifully crafted special grade aluminum chassis effectively shields against another common problem, RFI (Radio Frequency Interference) and a layer of Formula GC-303 (see below) blocks EMI (Electro Magnetic Interference). Internal wiring is Furutech  $\alpha$ -22, 3.8 sq. mm (< 12 AWG) guaranteeing low electrical resistance. Furutech Hyper Quality FP-20A(R) High End Performance Receptacles are "star-wired" to the High End Performance FI-09(R) IEC AC input of the e-TP 609 - separate sets of conductors for each of the three duplex receptacles. They feature Rhodium-plated phosphor bronze, non-magnetic conductors for stable, long lasting, optimized power transfer.

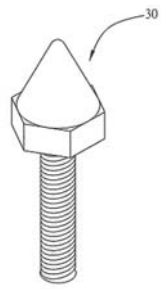
## Formula GC-303

GC-303 is a special material Furutech bonds to the interior bottom-plate of the chassis (see illustration below) that absorbs EMI (Electromagnetic Interference) generated by the *internal* fittings of the unit. The e-TP 609 uses no filtering besides Formula GC-303 so AC resistance is kept to a minimum, allowing a more resolving, powerful, dynamic, and colorful performance from your components.

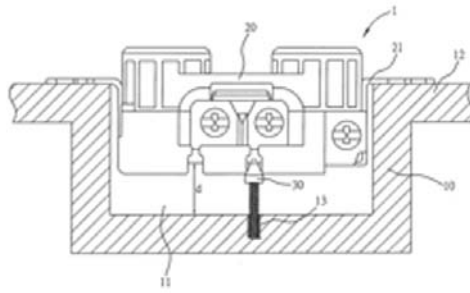


## Furutech's Patent-Pending Axial Locking System

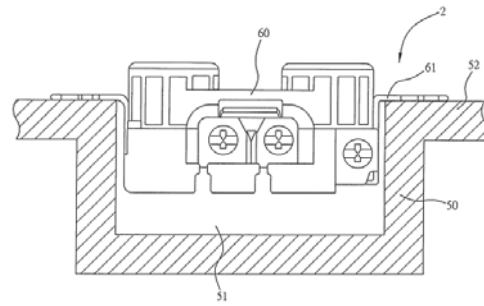
Furutech designed a special locking screw (see illustration below) that anchors each duplex receptacle preventing oscillation and enhancing long-term stability. Further, a special 3M material isolates the duplex outlets from resonance. Total attention to detail: Each Axial Lock is torqued to perfection to work with the 3M resonance control material, with 4 spikes provided to mount the entire unit.



Locking screw



Axial Locking System



Non-Axial Locking System

### Furutech's Two-Stage Cryogenic and Demagnetizing *Alpha Process*

Using cutting-edge technology and materials, Furutech developed a low-temperature two-stage process that significantly improves every facet of audio and video performance. The treatment begins during the manufacturing process with a deep, conditioning cryogenic freeze of all metal parts. Using high-end refrigerants -- liquid N<sub>2</sub> or He -- Furutech achieves temperatures of between -196 to -250C. The treated parts actually change their molecular structure at these extremes of temperature relieving internal stress. The molecules bond together more tightly and the overall structure becomes more stable. This improves electrical conductivity and so power and signal transfer.

Step two in the *Alpha Process* exposes these same parts to the patented Ring Demagnetization treatment. Ordinary high power magnets used for this purpose often *increase* magnetic effects; they leave some areas more magnetized than others. This patented process uses controlled attenuation to completely eliminate magnetization for immediately more vivid and colorful improvements. Ring Demagnetization further enhances conductivity of all treated materials. The patent holder for this treatment is Sekiguchi Machine Sale Co., Ltd. in Japan; Furutech are licensed users of the technology.

***ALL metallic parts used in Furutech products go through the Alpha Process treatment to keep all connectors, conductors, and metal parts in a perfect stress-free, stable and highly conductive state.***

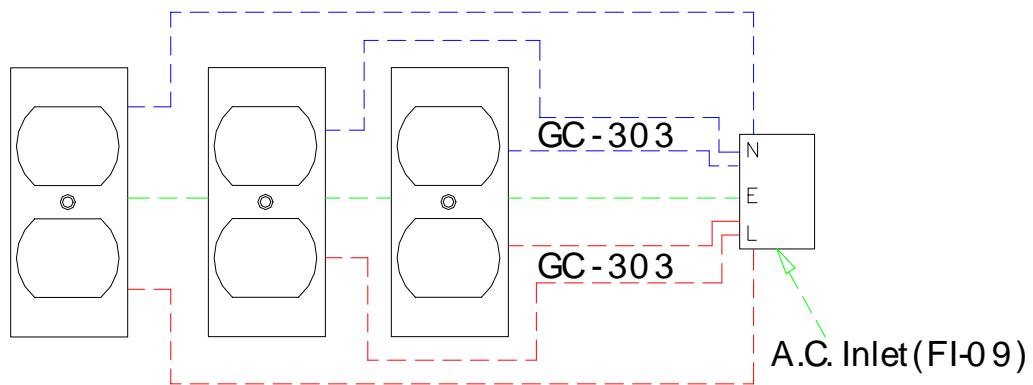
### The Final Result

The 2-Step Alpha Cryogenic and Demagnetizing Process works in tandem with other designed-in features to create the most optimized AC power transfer possible. Furutech's scientific outlook, total awareness and devotion to detail results in a greater sense of power, dynamics, and resolution, with cleaner, blacker backgrounds and a larger, more stable soundstage, vivid tonal colors and deeper extension at both ends of the frequency range. The e-TP 609 will allow the delicacy, refinement and nuance of a performance through, along with micro- and macro-dynamics that will leave you breathlessly engaged. Displays of all types will exhibit greater, sharper resolution with less ghosting, color shift, "snow", or vertical and horizontal lines.

# SPECIFICATIONS

| TYPE<br>SPECIFICATION | e- TP 609          | TYPE<br>SPECIFICATION | e- TP 609                 |
|-----------------------|--------------------|-----------------------|---------------------------|
| RATING                | 125V AC 50/60Hz    | MOVEMENT TEMP.        | -10C~40C                  |
| CURRENT               | 15 A               | PRESERVATIVE TEMP.    | -20C~50C                  |
| OUTLETS               | 6 Outlets          | BODY MATERIAL         | AL. ALLOY PLATE (PAINTED) |
| FILTER TYPE           | GC-303 Absorbs EMI | OUTWARD SIZE          | 246(W)X130(D)X56(H) mm    |
|                       |                    | WEIGHT (Net.)         | 2.85 Kg                   |

## CIRCUIT PATH



e-TP 609 A.C. Power Distributor

*All metallic parts are treated with*

*FURUTECH Alpha Cryogenic and Demagnetizing Treatment*

FURUTECH reserves the right to change product specifications without prior notice.

**FURUTECH CO., LTD.**

[www.furutech.com](http://www.furutech.com)

*Make A More Powerful Connection with Furutech!*